

Optional Peripherals

• iSignager-LCD



Model		EPP-16-ISIGNAGER-LCD-10-R10
LCD	LCD Size	10.4"
	Max Resolution	800 x 600
	Brightness (cd/m2)	400
	Contrast Ratio	500:1
	LCD Color	16.2M
	Pixel Pitch (mm)	0.264 (H) x 0.264 (V)
	Viewing Angle (H-V)	120/100
	Backlight MTBF	50000 hours
I/O interface	Video In/ Audio In	1 x RCA for composite video in 1 x 3.5mm phone jack for audio in
	USB	1 x USB 2.0
	Ethernet	1 x 10/100mBase-T
	Wireless	802.11 b/g wireless
	Serial Port	1 x RS-232
	Audio out	built-in 2 x AMP 1.5W speaker 1 x 3.5mm audio phone jack
Power	Input Voltage	12VDC in
	Power adapter	60W ACDC Power Adapter 90VAC~240VAC @50~60Hz input
	Consumption	27W

• AFOLUX Monitor



Model	EPP-16-AFL-08M / EPP-26-AFL-08M	EPP-16-AFL-10M / EPP-26-AFL-10M
LCD Size	8.4"	10.4"
Max Resolution	800 x 600	800 x 600
Brightness (cd/m2)	450	400
Contrast Ratio	500:1	500:1
LCD Color	262K	16.2M
Pixel Pitch (mm)	0.213 (H) x 0.213 (V)	0.264 (H) x 0.264 (V)
Viewing Angle (H-V)	120/100	120/100
Backlight MTBF	50000	50000
Input Video Signal Connector	1. Composite (NTSC/ PAL) 2. YPbPr 3. S-Video 4. VGA	
Audio In	AMP 1.5W + AMP 1.5W (internal speaker)	
Extension	IR Sensor (Remote Control)	
Construction Front Panel	ABS and PC Plastic front frame	
Construction Chassis	Aluminum Chassis	
Power adapter	36W	
On Screen Display (OSD)	Remote Control for OSD Functions	
User's Control	Image (Brightness, Contrast, Sharpness) Display (Auto Adjust, Phase, Clock, Display Control) PIP (PIP On/Off, PIP Input Select, PIP Size, PIP Color Contrast, Blend) Color (Auto Color, Color Temperature, sRGB) System (Audio, Factory Reset, Information, Input Select, Misc)	
Mounting	Wall Mounting (VESA 75 x 75 mm)	
Operation Temperature	0°C~50°C	0°C~50°C
Dimension (WxLxD)	233.86 x 183.86 x 41.09 mm	276 x 227 x 50.7 mm
Net Weight	1.14 KG	1.33 KG
Front Panel Protection	IP64 Compliant	
EMC/Safety	CE, FCC, UL, CCC	

1
Automation2
Point of Service3
Digital Signage4
RISC-based Solutions5
Medical Solutions

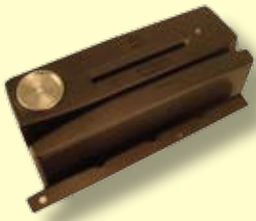
Magnetic Card Reader



P/N	Description
AFLP-12BMSR-U	Magnetic card reader for AFL-12B-LXPOS
AFLP-17AMSR-U	Magnetic card reader, for AFL-15A-LXPOS
EPP-16MSR-U	Magnetic card reader for EP-162/165 POS
EPP-26MSR-U	Magnetic card reader for EP-265/267 POS

- 90mm Magnetic Strip Reader
- Read track: ISO 1,2 , 3 (IATA, ABA, THRIFT.MINTS)
- Card Standard: ANSI, ISO, ABA
- Power Requirement: +5VDC +/- 5%
- Reading Indicator: Beeper
- Operating Temperature: 0 - 40 degree C
- Relative Humidity: 20% to 85% (Non-Condensing)
- Cable Straight 5ft.
- Interface: USB

Smart Card Reader



P/N	Description
AFLP-12BMSI-U	Smart card reader for AFL-12B-LXPOS
AFLP-17AMSI-U	Smart card reader for AFL-15A-LXPOS
EPP-16MSI-U	Smart card reader for EP-162/165 POS
EPP-26MSI-U	Smart card reader for EP-265/267 POS

- Magnetic Card: ISO 7811, AAMVA, DMV, JIS-II
- Smart Card: ISO 7816, EMV
- Power Requirement: +5VDC +/- 5%
- Reading Indicator: Beeper
- Operating Temperature: -10 - 55 degree C
- Relative Humidity: 10% to 90% (Non-Condensing)
- Cable Straight 5ft.
- Interface: USB

Barcode Reader



P/N	Description
AFLP-BRW01-U	Single-line, hand-held laser scanner, white color
AFLP-BRB01-U	Single-line, hand-held laser scanner, black color

Scan Performance	Depth of Scan Field	0 -140 mm (0"-5.5") for 0.33mm (13mil) bar codes
	Width of Scan Field	49mm (1.9") @ face; 195mm (7.7") @140mm (5.5")
	Scan Speed	72 scan lines per second
	Scan Pattern	Single scan line
	Minimum Bar Width	0.102 mm (4 mil)
	Print Contrast	35% minimum reflectance difference
	Roll, Pitch, Yaw	42°, 68°, 52°
Mechanical	Length	169 mm (6.7")
	Weight (w/o Cable)	97g (3.41 oz)
	Termination	10 pin modular RJ-45
	Cable	Standard 1.5m straight; optional 2.7m coiled
Electrical	Input Voltage	+5V DC +0.25V
	Power	675mW
	Operating Current	135mA@ 5VDC
	System Interface	USB

Cash Drawer



P/N	Description
AFLP-CW01-12V	Cash Drawer, 12V DC input, 6-pin RJ-12 phone jack, white color
AFLP-CB01-12V	Cash Drawer, 12V DC input, 6-pin RJ-12 phone jack, black color

Drawer	Heavy duty metal drawer with keylock
Casing	Robust metal construction
Front Panel	Robust metal construction
Lock	3 Position
Bill Tray	Separate coin tray removable from the bill tray. Adjustable dividers for four or five compartments
Coin Tray	Separate coin tray removable from the bill tray. Adjustable dividers for up to eight compartments
Slip Deposit Slot	Front access slot for check, credit card receipt, or any paper
I/O interface	6-pin RJ-12 phone jack for EPSON printer compatible
Solenoid	12V for 6 pin RJ-12 phone jack interface
Dimensions (WxLxH)	410 x 415 x 100 mm
Net Weight	6.8 KGs

Customer Display



P/N	Description
AFLP-CDW01	Customer Display, VFD, 5 x7 dot matrix, RS232, white color
AFLP-CDB01	Customer Display, VFD, 5 x7 dot matrix, RS232, black color

Multi-language support, including USA, France, Germany, UK, Sweden, Denmark I & II, Italy, Spain, Norway, Japan (Kayakana), Slavonic, Russian, etc....

Display	Vacuum Fluorescent Display Green
Display Pattern	5 x 7 dot matrix
Brightness	350- 700 cd/m2
Character	95 Alphanumeric & 32 International Characters
Dot Size (X x Y)	0.86 mm x 1.2 mm
Font Size	5.25 (W) x 9.3 (H)
Character Number	20 x 2 for 5 x 7 font
Command	LD-220, EPSON POS D101, Aedex, UTC/S, UTC/P, ADM788, DSP800, CD5220, EMAX, LOGIC CONTROL
Dimension (Panel)	220 X 50 x 86 mm
Dimension (Support)	Two supports per package. Per support 130mm
Dimension (Base)	217 x 106 x 20 mm
Viewing Angle	Max 90°
Horizontal Rotation	Max 360°
Interface	USB
Power Source	+5V DC

VFD Customer Display



P/N	Description
AFLP-12VFD-U	VFD Customer Display for AFL-12B-LXPOS with bracket
AFLP-15VFD-U	VFD Customer Display for AFL-15A-LXPOS with bracket
EPP-16VFD-U	VFD Customer Display for EP-16x series with bracket
EPP-26VFD-U	VFD Customer Display for EP-26x series with pole stand

Display	Vacuum Fluorescent Display Green
Display Pattern	5 x 7 dot matrix
Brightness	350- 700 cd/m2
Character	96 Alphanumeric & 13 International Characters 1 user define character
Character Size (X x Y)	9.0 mm x 5.25 mm
Font Size	5.25 (W) x 9.3 (H)
Character Number	40 characters (20 columns x 2 lines)
MTBF	25000 hours (power on time)
Dimension (Panel)	215 X 84 x 55 mm
Operating Temperature	5- 45 °C
Operating Humidity	30% - 85%
Storage Temperature	-10- 55°C
Storage Humidity	10% - 85%
Power Source	+5V DC
Power Consumption	3-6 W

Thermal Printer



P/N	Description
AFLP-TPW01	Thermal Printer, 24VDC, RS232, thermal line printing, white color
AFLP-TPB01	Thermal Printer, 24VDC, RS232, thermal line printing, black color

Print Method	Direct thermal line printing
Casing	9x17/ 12x24 64/48 Columns 95 Alphanumeric; 32 Interenation; 128x7 graphics Traditional/ Simplified Chinese, Japanese UPC-A, UPC-E, JAN8 (EAN8), JAN (EAN13), CODE 39, CODE 93, CODE 128, CODABAR
Print Speed	180mm/ sec (60 lps) max
Data Buffer	96 Kbytes or 2k bytes
Interface	RS 232C (32K)
Paper Dimensions	Thermal roll paper: 79.5 +/-0.5 x dia 83.0 mm
Paper Thickness	0.06 to 0.12 mm
Power	24VDC +/-7%
Current Consumption	Approx 2.0A (mean)
Overall Dimensions	146 (W) x 197(D) x 145 (H) mm
Power Adapter	Input 100-240V AC, Output 24VDC, 60W max.

1

Automation

2

Point of Service

3

Digital Signage

4

RISC-based Solutions

5

Medical Solutions