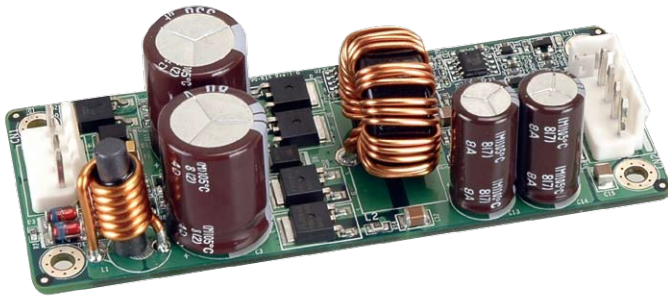


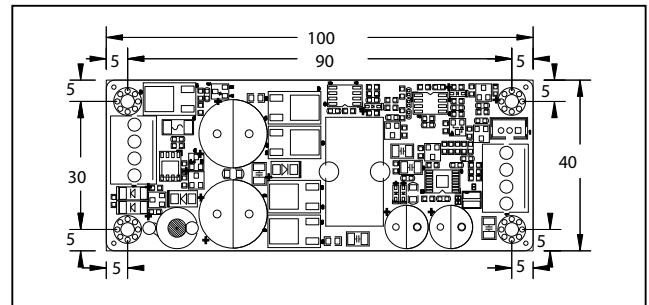
IDD-241100/IDD-481100 100 W DC/DC Converter Module



Features

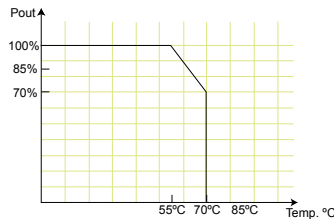
1. 100W total power
2. AT mode on/off
3. Up to 90% efficiency
4. RoHS compliant
5. Compact size

Dimensions (Millimeters)



Specifications

- Output (max.): 12 V@8.33 A
- Max. total output: 100 W
- Input:
 - 24 VDC for IDD-241100
 - 48 VDC for IDD-481100
- Performance characteristics
- Noise & ripple: <240 mV
- Load regulation: <240 mV
- Efficiency: Up to 90%
- Dimensions: 40 mm x 100 mm
- Weight: NW: 60 g
- Operating temperature: -20°C ~ 70°C



PIN Assignments

Input Power Connector

CN1	Pin 1	Pin 2	Pin 3	Pin 4
	VIN	VIN	GND	GND

Output Power Connector

CN2	Pin 1	Pin 2	Pin 3	Pin 3
	+12 V	+12V	GND	GND

Power on/off, LED Connector

CN3	Pin 1	Pin 2	Pin 3
	SHDN# (Shut down output Power function, short Pin1& Pin2)	GND	LEDA (Disable LED function, short Pin2& Pin3)

Wire Harness Selection Guide

DC Input (CN1)



- Options 3.**
PN: CB-NOLP4-RS
 Cable for terminal block

Power On/off (CN1)



- Options 1.**
PN: CB-JST3PSW-RS
 Cable with on/off switch

Packing information

1 x IDD-241100/IDD-481100

1 x QIG

Ordering Information

Part No.	Description
IDD-241100-R10	100 W DC/DC 24 V input; 12 V output with 100W total power.
IDD-481100-R10	100 W DC/DC 48 V input; 12 V output with 100W total power.
CB-JST3PSW-RS	30 cm cable on/off switch
CB-NOLP4-RS	20 cm cable for terminal block DC input

1 Industrial Computing Solutions

2 Embedded Computing Solutions

3 RISC-Based Embedded Solutions

4 Industrial Data Collector/Server Solutions

5 Industrial Data Collection

6 I/O Communication Solutions

7 Panel Solutions

8 Power Supply/Network Communication/Peripherals