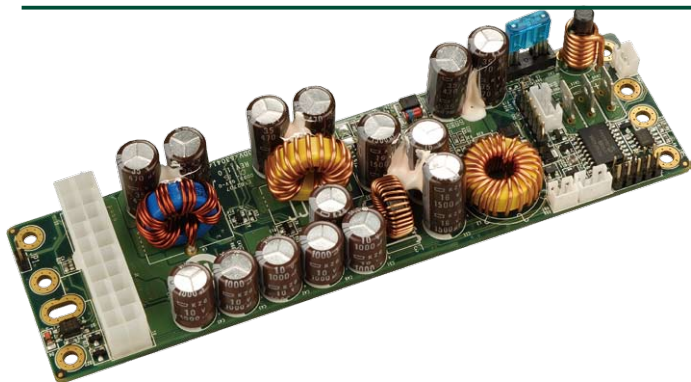


# IDDV-6304140A

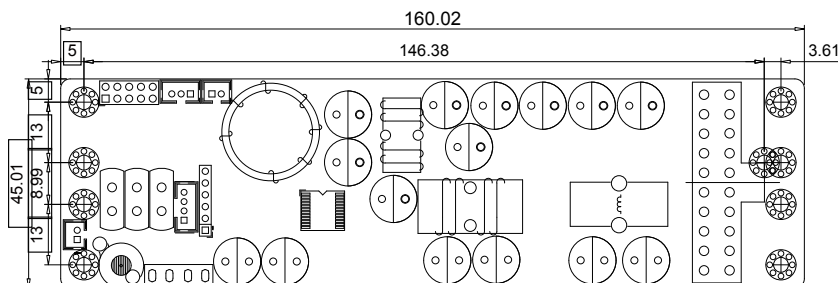
140 W DC/DC Smart ATX Converter Module for Vehicle



**Dedicated ATX Power for Car PC and Battery Powered Applications**

**Designed to provide power and to control the on/off switch of a motherboard based on the ignition status.**

## Dimensions (Millimeters)

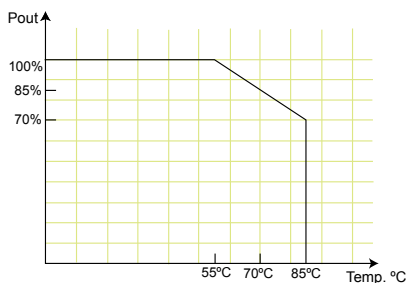


## Features

1. Wide input range: 6-30 VDC
2. Smart system on/off control
3. 6 selectable power on/off timing modes
4. Load down protection
5. Over voltage protection
6. Short circuit protection
7. Over current protection
8. Battery voltage monitor
9. Amplifier on-delay control
10. RoHS compliant
11. Compact size
12. IrDA remote control off (options)

## Specifications

- Output (max.): 5 V@10 A, 3.3 V@10 A, 12 V@4 A, -12 V@0.15 A & 5 VSB@1.5 A
- Max. total output: 140 W
- Input: 6 VDC to 30 VDC  
Min. input operating voltage: 5.7 V  
Max. input operating voltage: 30 V
- Deep-discharge shut down voltage: 10.6 V
- Startup voltage: 8 V
- Efficiency: up to 90%
- Dimensions: 45 mm X 160 mm
- Weight: NW: 118 g
- Operating temperature: -20°C ~ 85°C
- Storage temperature: -40°C ~ 125°C



## PIN Assignments

### Input Power Connector

CN15	Batt (+)
CN16	ACC ON
CN17	Batt (-)

### Output Power Connector

J1	Standard 20-pin ATX
----	---------------------

## Wire Harness Selection Guide

### SBC Main Power (J1)



**PN: CB-ATX20PIO-RS**  
20-pin ATX to 20-pin ATX / SATA / HDD cables

### Input Power Connector (CN15, 16, 17)



**PN: CB-BATACC-RS**  
Wire to battery and ACC on

## Packing information

- 1 x IDD V-6304140A
- 1 x QIG
- 1 x Wire cable for PWR/SW AND MB/SW (P/N: 32100-153400-RS)
- 1 x Wire cable for LED /AMP (P/N: 32100-153500-RS)

## Ordering Information

Part No.	Description
IDDV-6304140A-R10	140 W DC/DC 6-30 VDC input; vehicle converter module
CB-ATX20PIO-RS	30 cm, 20-pin ATX to 20-pin ATX / SATA (20 cm) / HDD cables
CB-BATACC-RS	30 cm, wire to battery and ACC on

1

Industrial Computing Solutions

2

Embedded Computing Solutions

3

RISC-Based Embedded Solutions

4

Industrial Data Collector/ Server Solutions

5

Industrial Data Collection

6

I/O Communication Solutions

7

Panel Solutions

8

Power Supply/ Network Communication/ Peripherals