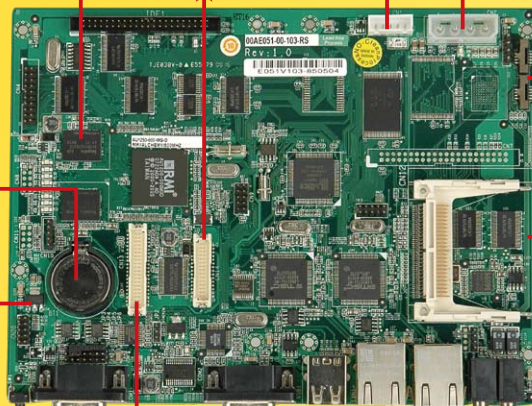


KAMIO-1251 MIPS-based SBC



128MB SDRAM 18-bit LVDS LCD I/F LCD inverter I/F 5V / 12V DC input



4-wired resistive touch I/F

Battery-backup RTC

SPI I/F can connect with KAMIO-WL01 WiFi module



KAMIO-WL01

24-bit TTL LCD I/F can connect with KAMIO-VGA01 TTL-to-VGA output module



KAMIO-VGA01

Preinstalled Windows® CE5.0 or ARM-Linux boot from CompactFlash card

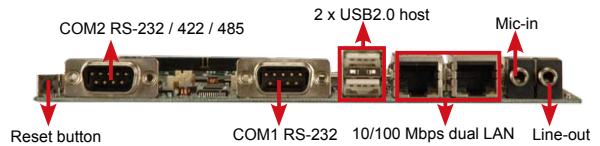


CF card

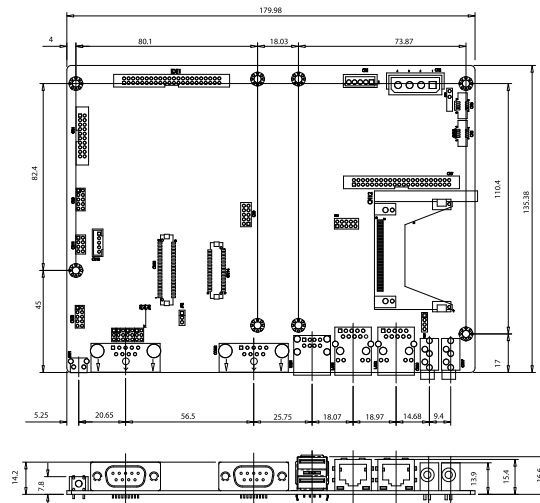


Features:

- RMI Alchemy AU1250 500MHz high performance processor with MAE (Media Acceleration Engine)
- Provide hardware decode for MPEG 1/2/4 and WMV9.
- Extremely durable in harsh environments.
- Compact form factor.
- Low power consumption.
- No cooling fan required.
- Built-in TTL and LVDS TFT LCD interfaces and touch controller.
- Standard peripheral device interface connectors include Ethernet, Serial, USB ports, CompactFlash memory, and audio.
- Preinstalled Windows® CE5.0 or Gnu/Linux with Rev2.6.18 kernel embedded operating system.
- Windows® CE5.0 SDK or ARM-LINUX_GCC tool chain for user application software development.



Dimensions (Unit : mm)



Packing List

- 1 x KAMIO-1251 single board computer
- 1 x Utility CD includes application tools, SDK, and technical document
- 1 x 256MB CompactFlash card with built-in Windows® CE5.0 or ARM-Linux kernel Rev2.6.18

Ordering Information

Part No.	Description
KAMIO-1251-CE5/-R10	RMI Alchemy AU1250 RISC-based embedded SBC with 256MB CompactFlash card and built-in Windows® CE5.0 OS
KAMIO-1251-UX/-R10	RMI Alchemy AU1250 RISC-based embedded SBC with 256MB CompactFlash card and built-in ARM-Linux kernel Rev2.6.18

Options

Part No.	Description
KAMIO-VGA01-R10	LCD TTL interface to analog VGA output module
KAMIO-WL01-R20	Wireless LAN module supports 802.11b/g
KAMIO-1251-CE5/BSP/-R10	Windows® CE5.0 board support package for KAMIO-1251
KAMIO-1251-UX/BSP/-R10	Embedded-Linux kernel 2.6.18 board support package for KAMIO-1251

1 Industrial Computing Solutions

2 Embedded Computing Solutions

3 RISC-Based Embedded Solutions

4 Industrial Data Collector/Server Solutions

5 Video Capture Solutions

6 I/O Communication Solutions

7 Panel Solutions

8 Power Supply/Network/Communication/Peripherals